

Professional Propulsion Systems

SYSTEM SPECIFICATIONS

ENGINE



Name:	305 HS
Manufacturer:	ZANZOTTERA ENGINES
Type:	2-cylinder boxer
Displacement:	312 cm³
Max. performance:	29.7 HP at 7000 RPM
Weight:	13 Kg
Max RPM:	7000 RPM
Running direction:	Clockwise

PROPELLER



Name:	33x10 2B CCW (Direction guide)
Manufacturer:	Mejzlik
Diameter:	33 in
Pitch:	10 in
Mass:	396 g
Contact:	info@mejzlik.eu

ANALYSIS



Need expert guidance on analyzing your flight performance?

Our team provides a comprehensive analysis of RPM calculations, motor and propeller efficiency, including customized propeller selection recommendations to ensure your system achieves maximum efficiency.

Please reach out to us at info@mejzlik.eu or idanbi@zanzotteraengines.com

ID: **0160**

PERFORMANCE OF THE SYSTEM

Flight velocity

0 m/s

Rotational Speed [RPM]	Thrust [N]	Torque [Nm]	Mechanical Power [W]	Propulsion efficiency [%]
1000	11	0.47	49	0
1500	25	1.07	167	0
2100	52	2.14	471	0
2600	81	3.26	888	0
3200	124	5.02	1682	0
3700	168	6.89	2668	0
4200	221	8.87	3900	0
4300	233	9.45	4257	0
4800	294	12.02	6041	0
5400	382	15.78	8925	0

Flight velocity

10 m/s

Rotational Speed [RPM]	Thrust [N]	Torque [Nm]	Mechanical Power [W]	Propulsion efficiency [%]
1000	-2	0.23	24	—
1500	5	0.72	112	42
2100	27	1.93	425	64
2600	52	3.24	881	60
3200	92	5.15	1726	53
3700	133	7.06	2734	49
4200	181	9.28	4081	44
4300	192	9.77	4398	44
4800	249	12.45	6257	40
5400	329	16.25	9192	36

PERFORMANCE OF THE SYSTEM

Flight velocity

20 m/s

Rotational Speed [RPM]	Thrust [N]	Torque [Nm]	Mechanical Power [W]	Propulsion efficiency [%]
2100	-8	0.83	183	—
2600	5	1.59	434	23
3200	38	3.55	1191	63
3700	74	5.56	2152	68
4200	117	7.9	3474	67
4300	126	8.41	3787	67
4800	179	11.17	5617	64
5400	254	15.1	8541	59

Flight velocity

30 m/s

Rotational Speed [RPM]	Thrust [N]	Torque [Nm]	Mechanical Power [W]	Propulsion efficiency [%]
2600	-23	0.97	265	—
3200	-19	1.41	472	—
3700	1	2.65	1026	4
4200	36	4.71	2073	53
4300	45	5.23	2356	57
4800	91	7.99	4015	68
5400	158	11.99	6783	70

PERFORMANCE OF THE SYSTEM

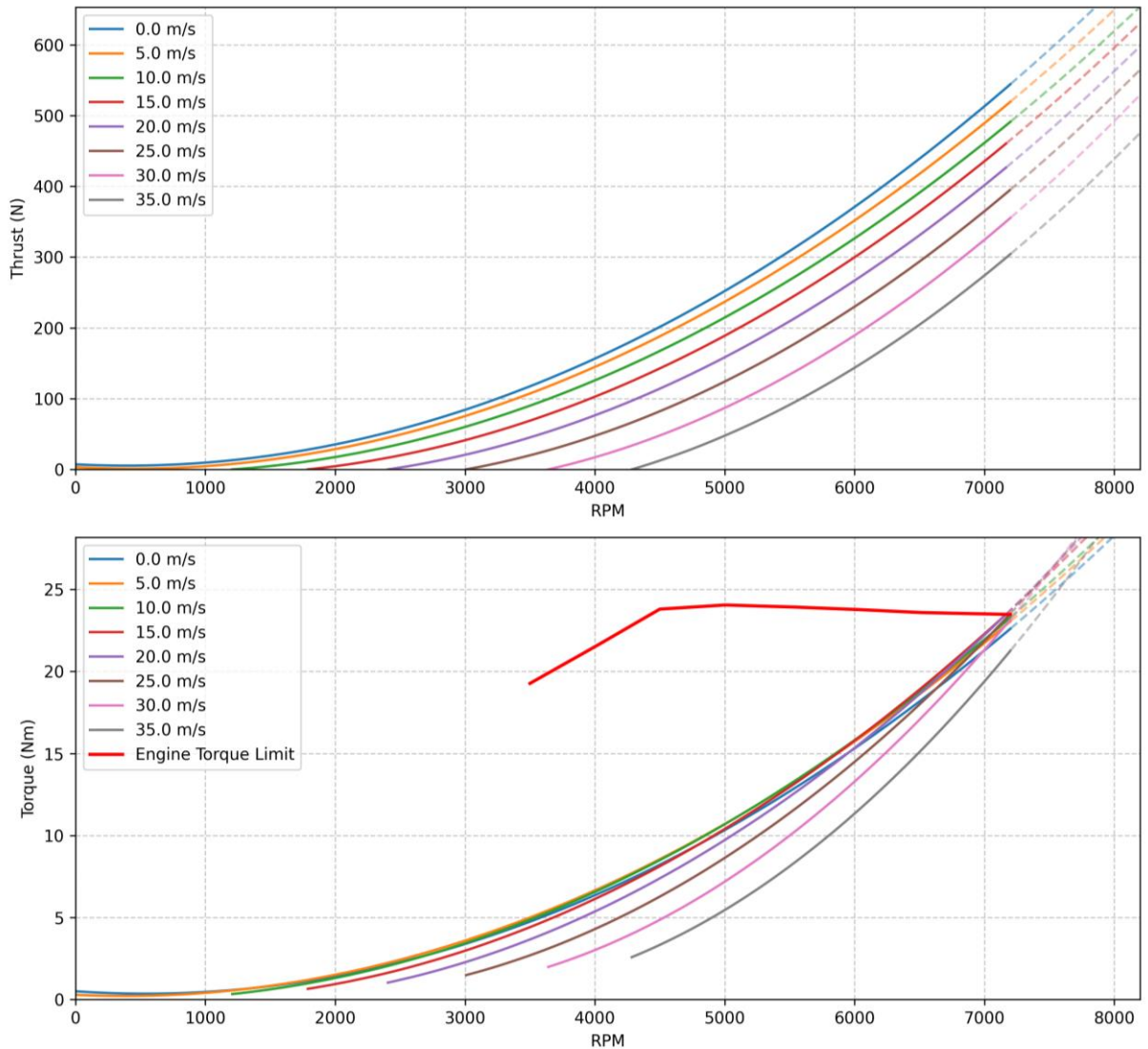
Flight velocity

40 m/s

Rotational Speed [RPM]	Thrust [N]	Torque [Nm]	Mechanical Power [W]	Propulsion efficiency [%]
3200	-45	0.77	258	—
3700	-46	1.33	515	—
4200	-37	2.15	945	—
4300	-33	2.42	1088	—
4800	-7	3.84	1932	—
5400	47	7.1	4016	47

PERFORMANCE OF THE SYSTEM

305HS + Mejlík 33x10 2B Performance in flight



NOTE



Data presented in this product sheet are a combination of measurements of engine performance (RPM, torque), which is complemented with propeller data, simulated in Mejlík's proprietary simulation software. The greyed out values are above engine limit.

Data is valid for 0m ISA. Propeller performance simulation accuracy can diverge at higher tip speeds (above 0.7 Mach). Propeller is structurally safe to operate below Mach 1 tip speed.

ID: **0160**