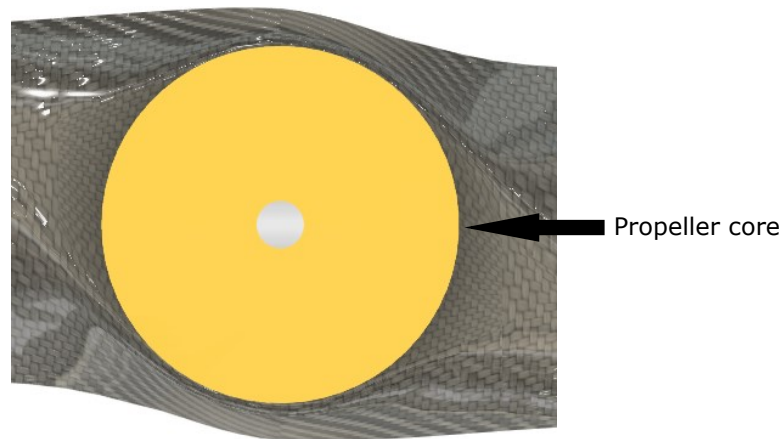


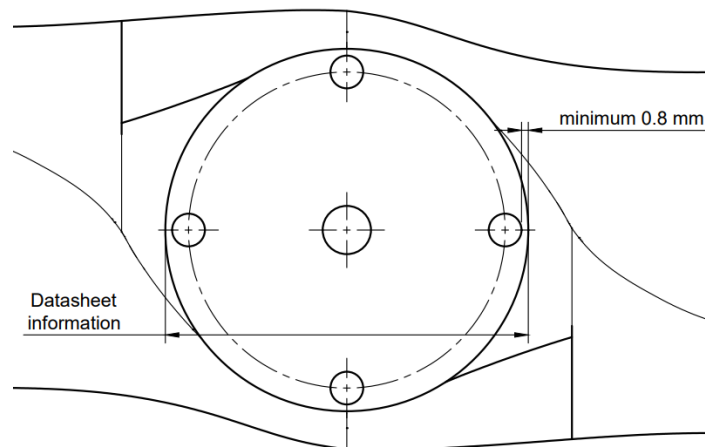


Rules to follow

Every propeller has a core that the drilling pattern must fit into¹. Information about the core diameter can be found in the propeller datasheet².



There is a minimum allowable distance between the outermost drilling and the edge of the propeller core. The minimum allowable distance is **0.8 mm**.



¹ Only applies to fixed propellers. Folding propellers have fixed drilling patterns indicated on the datasheet.

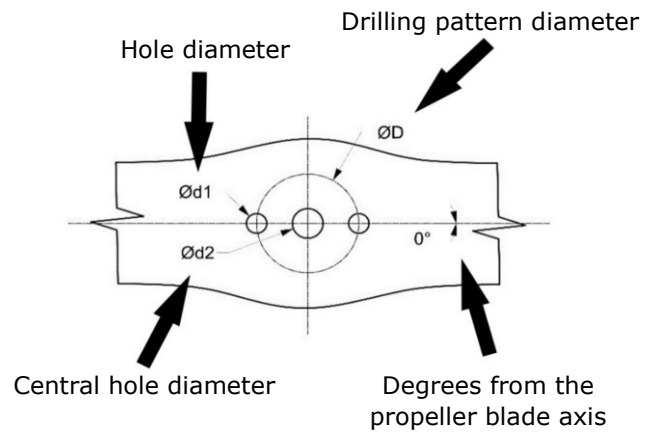
² Some propellers do not have a datasheet. For more information contact us at info@mejzlik.eu

³ Some MC propellers have non-round cores. The dimension indicated in the datasheet is the minimum dimension. Some larger drilling patterns might also fit. For more information contact us at info@mejzlik.eu

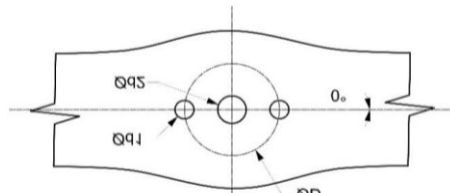
Standard drilling patterns

2A0

Degrees from the propeller blade axis
 A - standard drilling pattern
 B - combined drilling pattern
 Number of holes



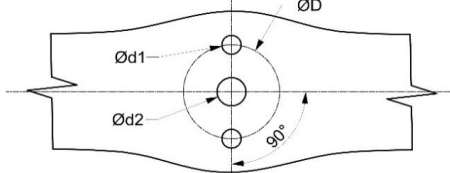
2A0



$\text{Ød}_1 =$
 $\text{Ød}_2 =$
 $\text{ØD} =$



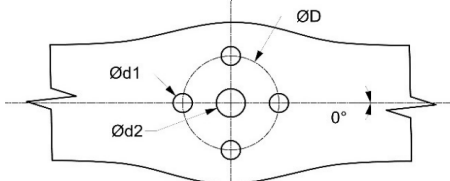
2A90



$\text{Ød}_1 =$
 $\text{Ød}_2 =$
 $\text{ØD} =$



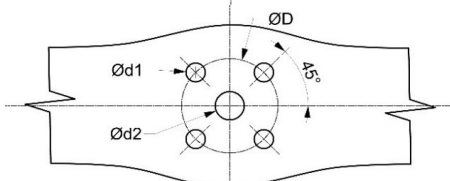
4A0



$\text{Ød}_1 =$
 $\text{Ød}_2 =$
 $\text{ØD} =$



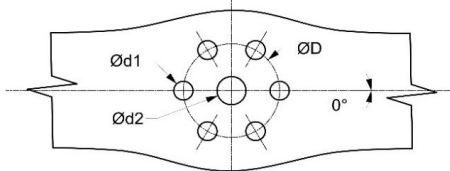
4A45



$\text{Ød}_1 =$
 $\text{Ød}_2 =$
 $\text{ØD} =$



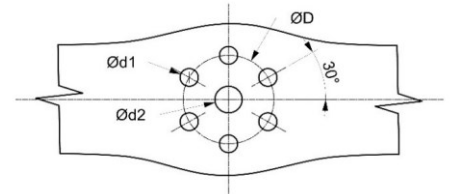
6A0



$\text{Ød}_1 =$
 $\text{Ød}_2 =$
 $\text{ØD} =$



6A30



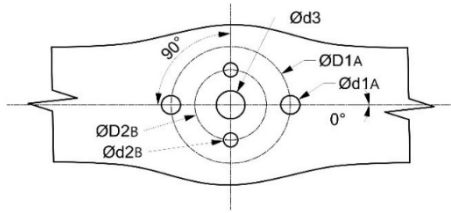
$\text{Ød}_1 =$
 $\text{Ød}_2 =$
 $\text{ØD} =$





Combined drilling patterns

6A30



- $\varnothing d_{1A} =$
- $\varnothing D_{1A} =$
- $\varnothing d_{2B} =$
- $\varnothing D_{2B} =$
- $\varnothing d_3 =$



Special drilling patterns

For special drilling patterns, please provide a drawing with all necessary dimensions and angles.

